

(=25)

				.	.		

	. (%)	. (%)

Fig.1 Forward Current vs. Ambient Temperature

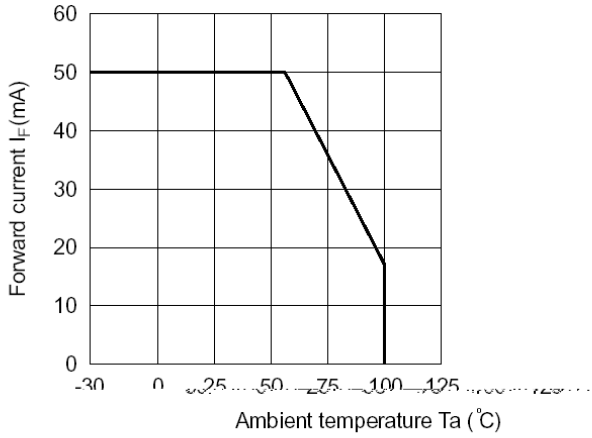


Fig.2 Collector Power Dissipation vs. Ambient Temperature

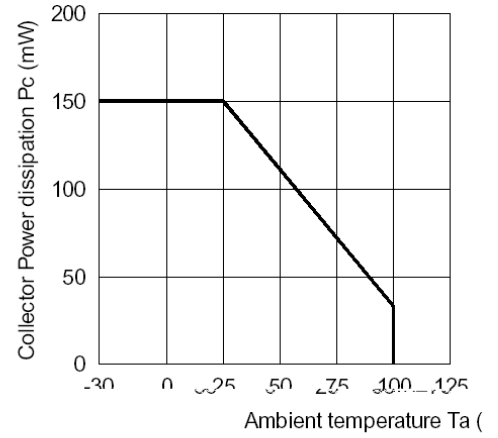


Fig.3 Collector-emitter Saturation Voltage vs. Forward Current

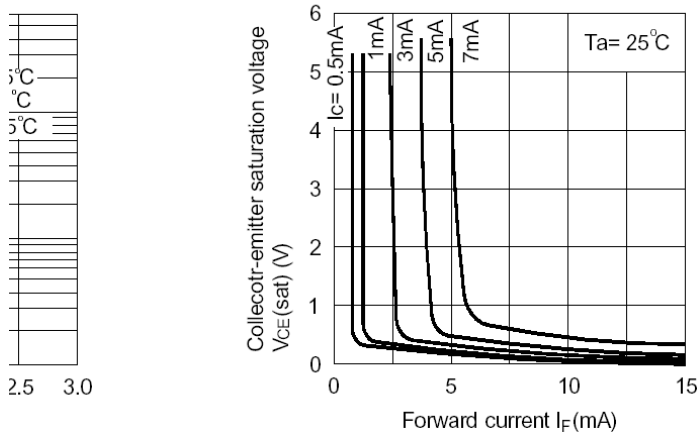


Fig.4 Forward Current vs. Forward Voltage

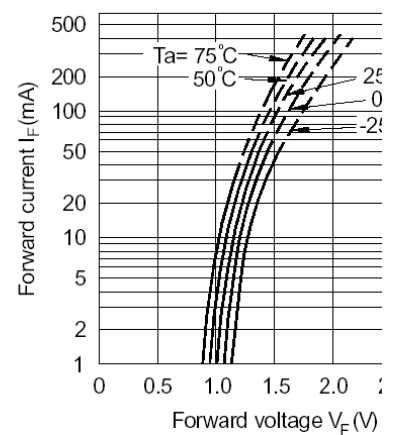


Fig.5 Current Transfer Ratio vs. Forward Current

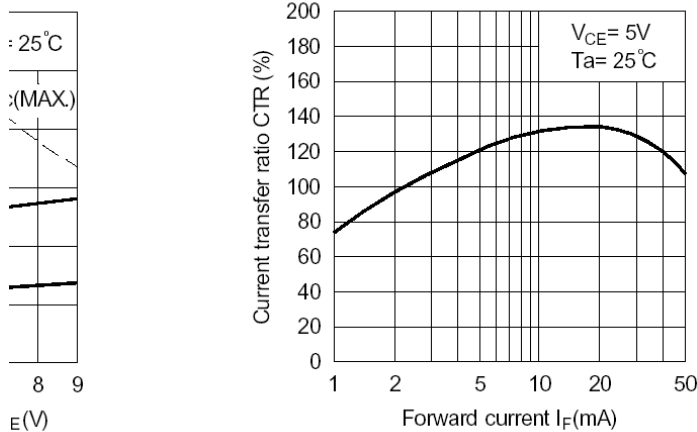


Fig.6 Collector Current vs. Collector-emitter Voltage

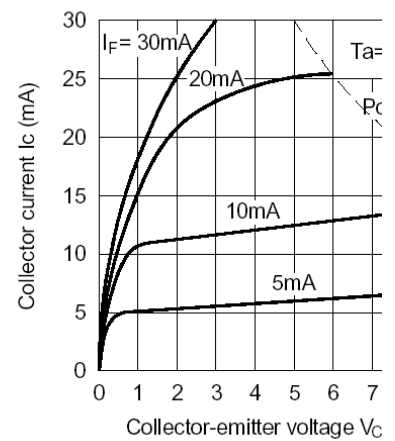


Fig.7 Relative Current Transfer Ratio vs. Ambient Temperature

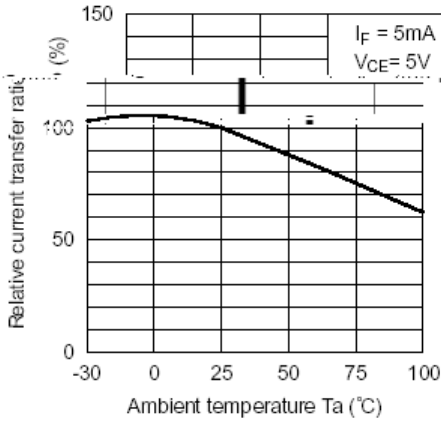


Fig.8 Collector-emitter Saturation Voltage vs. Ambient Temperature

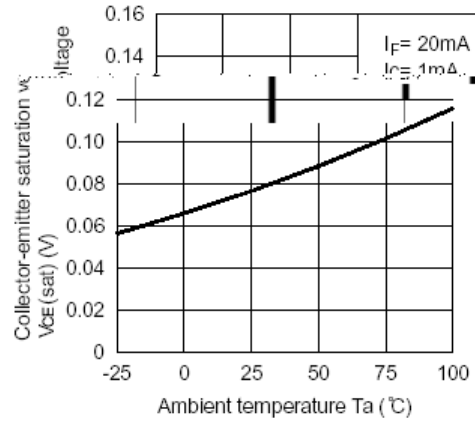


Fig.9 Collector Dark Current vs. Ambient Temperature

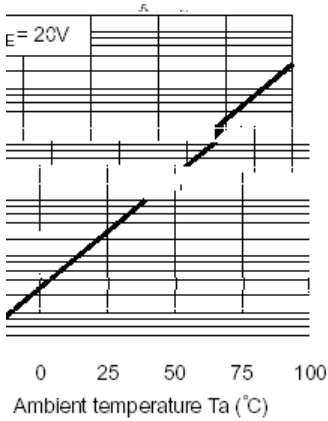


Fig.10 Response Time vs. Load Resistance

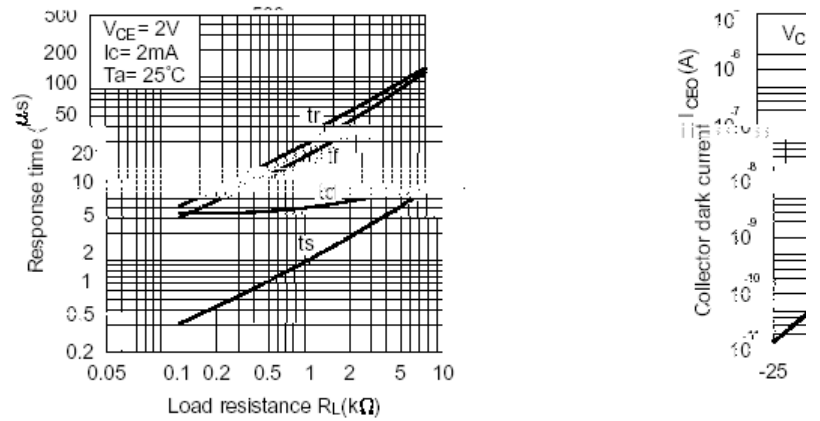
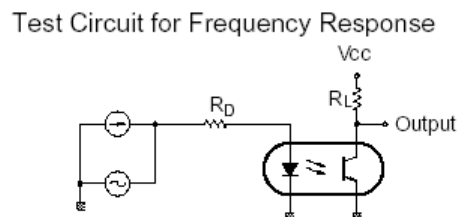
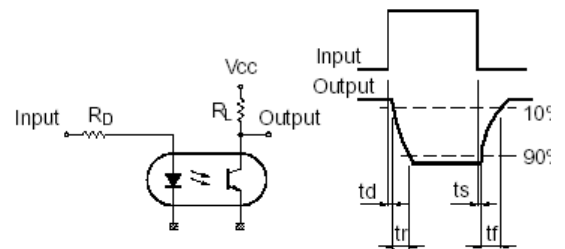
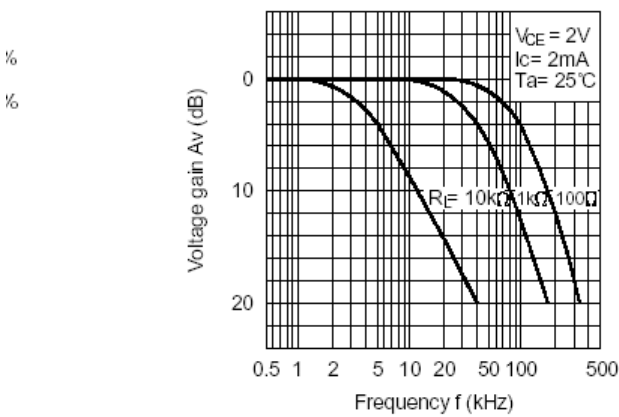


Fig.11 Frequency response Test Circuit for Response Time





y -783 1005

BPC-817

		MIL-STD-750: 1026 MIL-STD-883: 1005 JIS C 7021 : B-1	I f =50nA L1 ¹⁰⁰⁰ ₋₇ 42	
	\$	ML1	y	-71 : B-1
